

PRE-SPAWN MIGRATIONS BY LANCE VALENTINE DETROIT RIVER WORKSHOP SEMINAR #1



Pre-Spawn Migrations

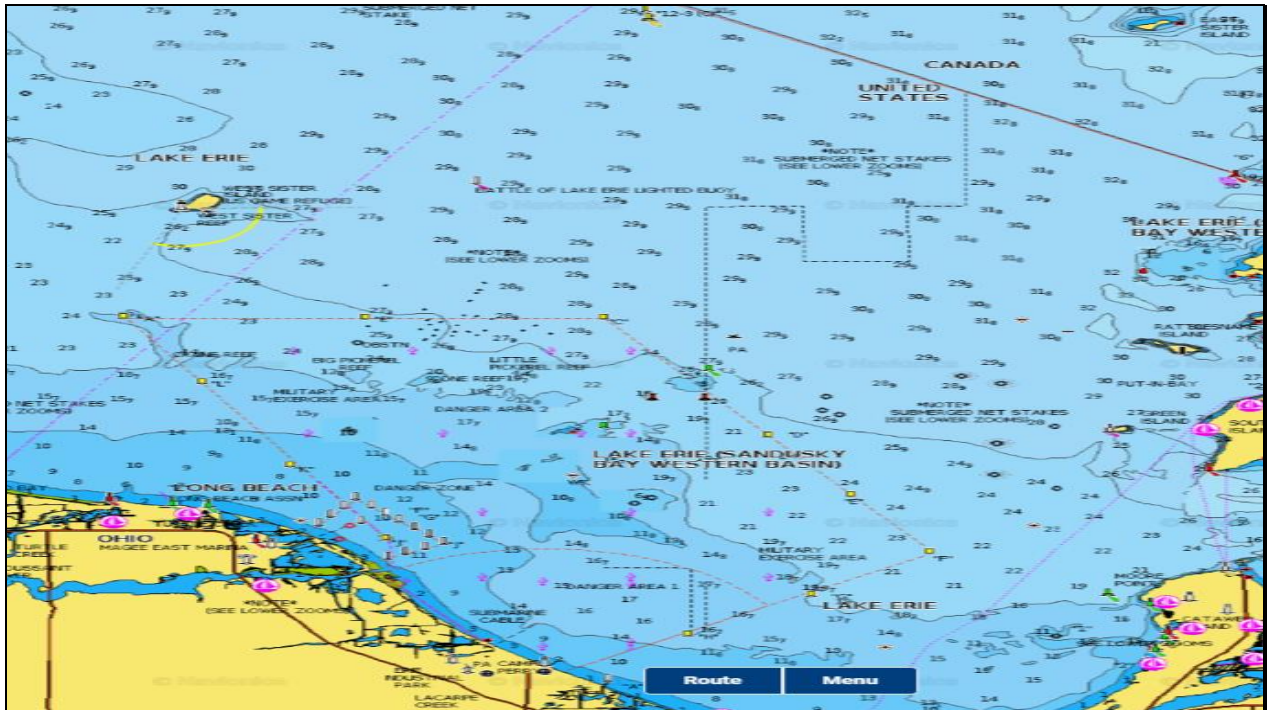
Pre-Spawn migrations from Lake Erie and Lake St. Clair will change based on local weather and water conditions, ice-out timing, water temperature and more. Understanding how and why the fish migrate into the river is important in getting on fish early.

James Valentin
SPORTFISHING

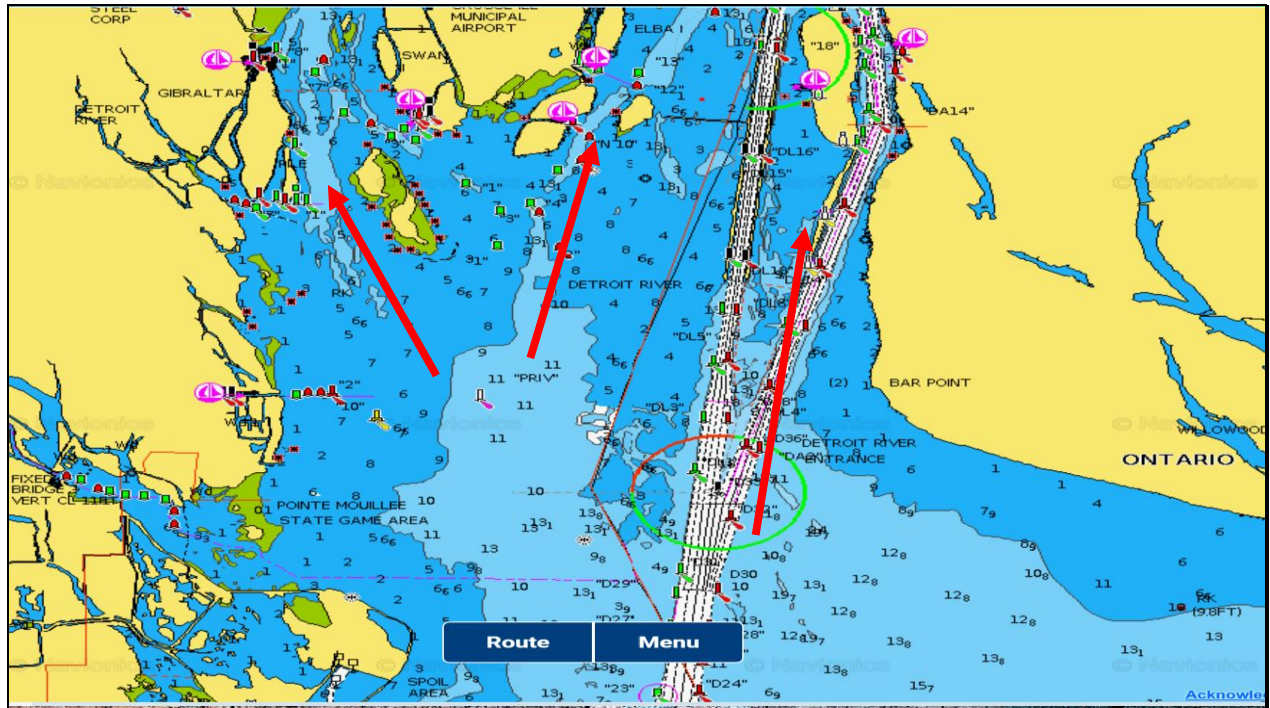
Pre-Spawn Migrations Coming From Erie

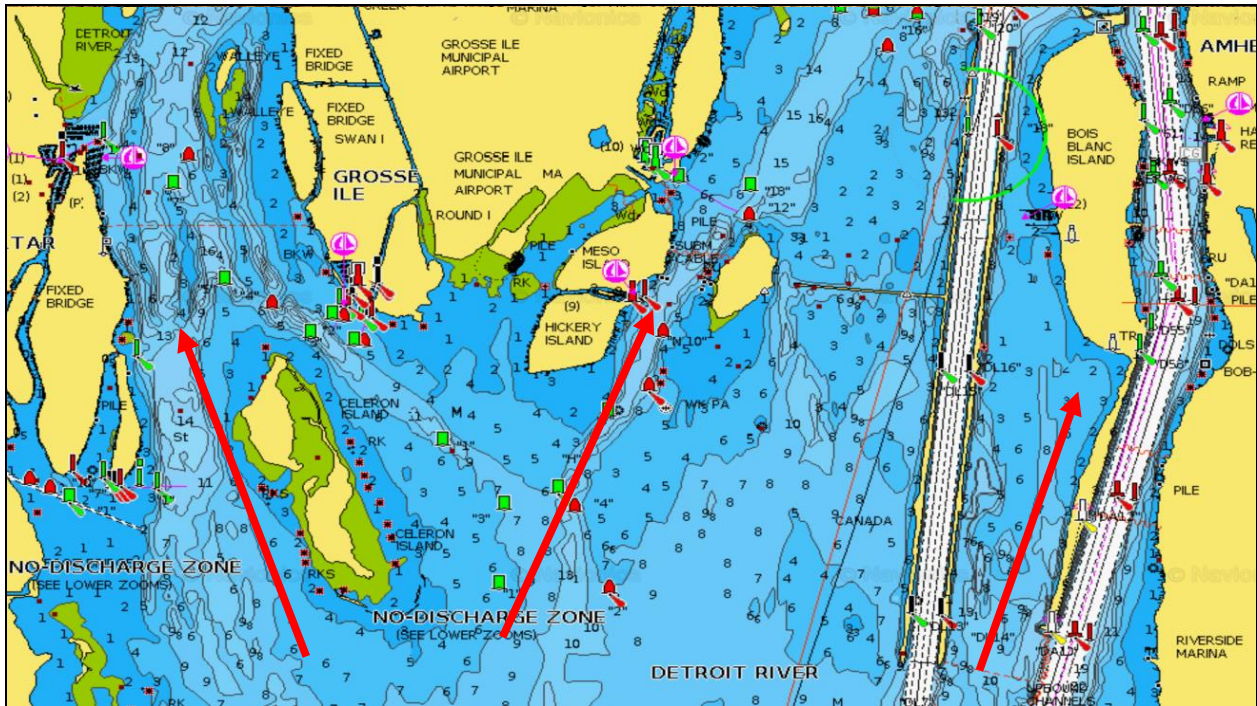


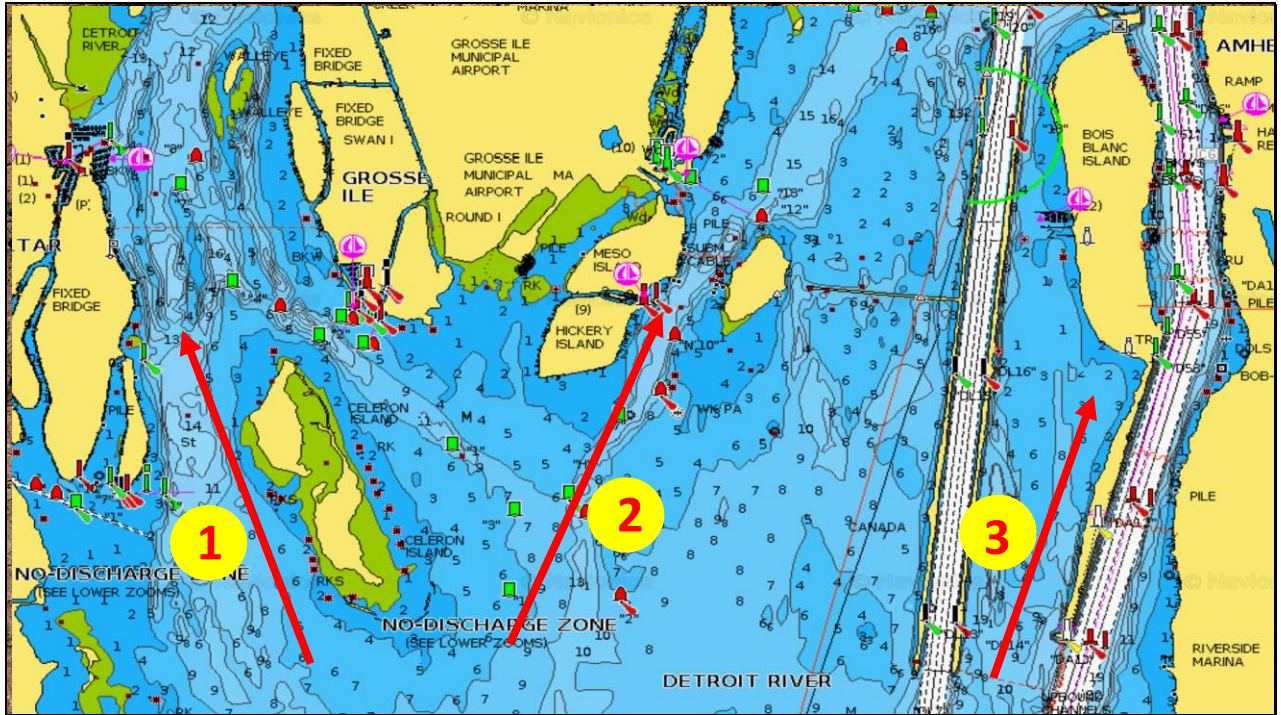
Anger Ventures
SPORTFISHING



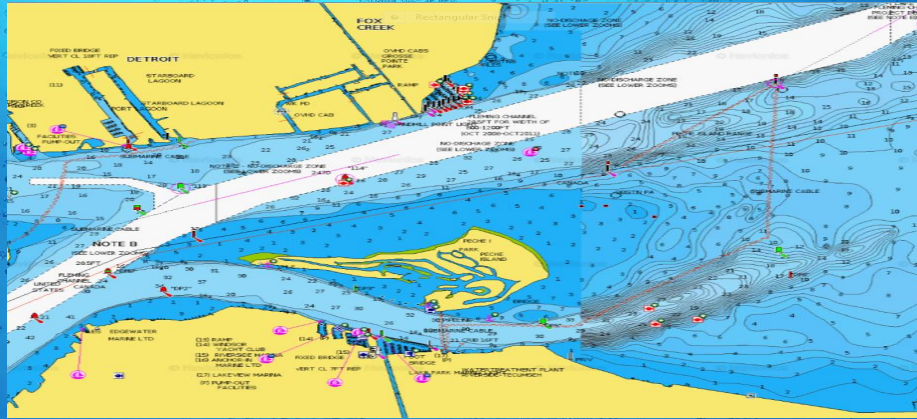




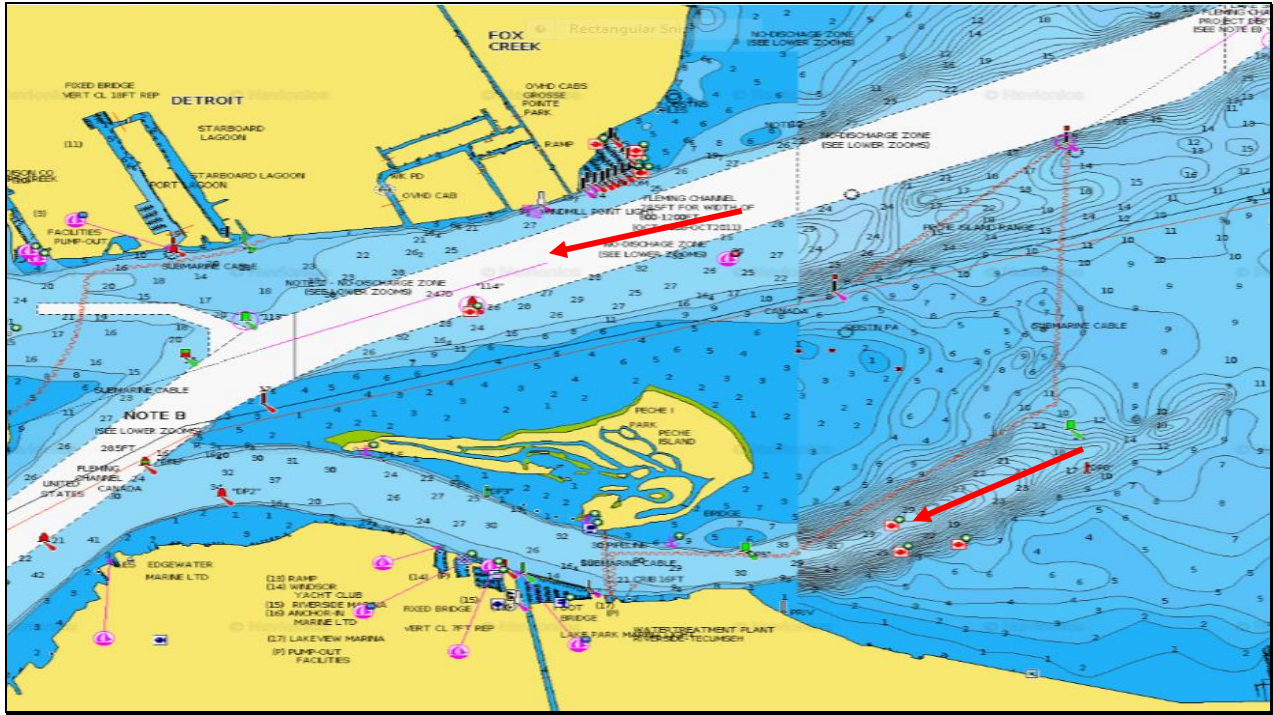




Pre-Spawn Migrations Coming From LSC



James VanAntwerp
SPORTFISHING





**ERIE CHANGES AFFECTING WALLEYE
MIGRATIONS
BY ALI SHAKOOR
DETROIT RIVER WORKSHOP
SEMINAR #2**

**ERIE CHANGES AFFECTING
WALLEYE SPAWNING MIGRATIONS**



James Valentine
SPORTFISHING

Overview

CHANGES IN FISH MOVEMENT

1. WHERE DO DETROIT RIVER WALLEYE SPEND WINTER?
2. HOW DO WARM WINTERS EFFECT THE FOOD CHAIN IN ERIE?
3. LESS FISH SPAWNING IN THE RIVER WITH WARMER WINTERS?
4. LACK OF WARM WATER DISCHARGE AND SPAWNING

James Valente
SPORTFISHING

WINTER WALLEYE LOCATIONS

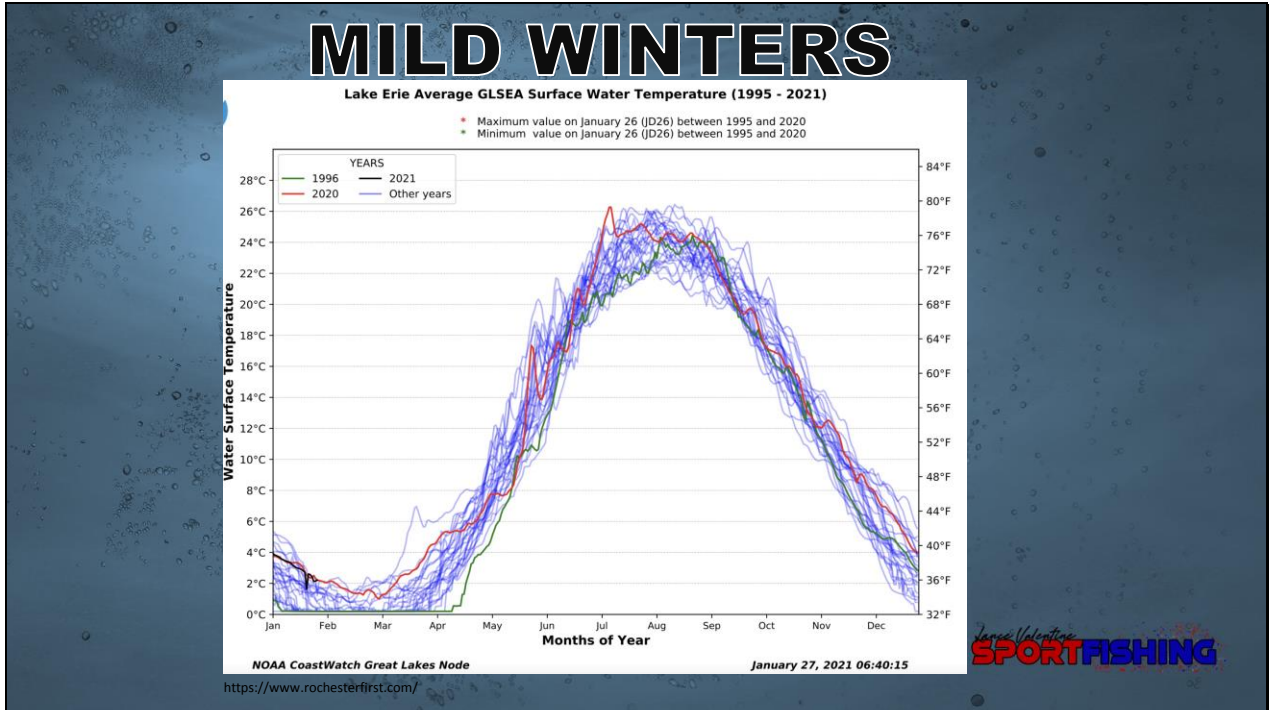
1. **WALLEYE ARE ALWAYS MIGRATING, EVEN RESIDENT FISH**
 - **SCALE OF MOVEMENT**
2. **DEEP TO SHALLOW, NEAR TO OFFSHORE, ETC**
 - **DIFFERENT TYPES OF MIGRATIONS/MOVEMENTS**
 - **DIEL**
 - **SPAWNING-BRIEF REVIEW**

James Valente
SPORTFISHING

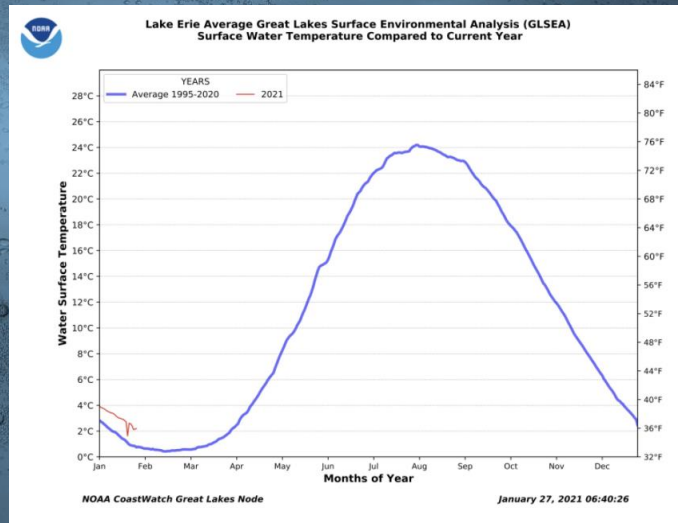
WINTER WALLEYE LOCATIONS

3. MOVEMENT TO STAGING AREAS IN LATE FALL
 - PHOTOPERIOD, TEMPERATURE, URGE TO SPAWN
 - BAIT-SOMATIC VS GAMETE GROWTH
 - WATER TEMPERATURE-VARIES WITH DEPTH
4. SOME WALLEYE MOVE TO SPAWNING AREAS EARLY

James V. Martin
SPORTFISHING



MILD WINTERS



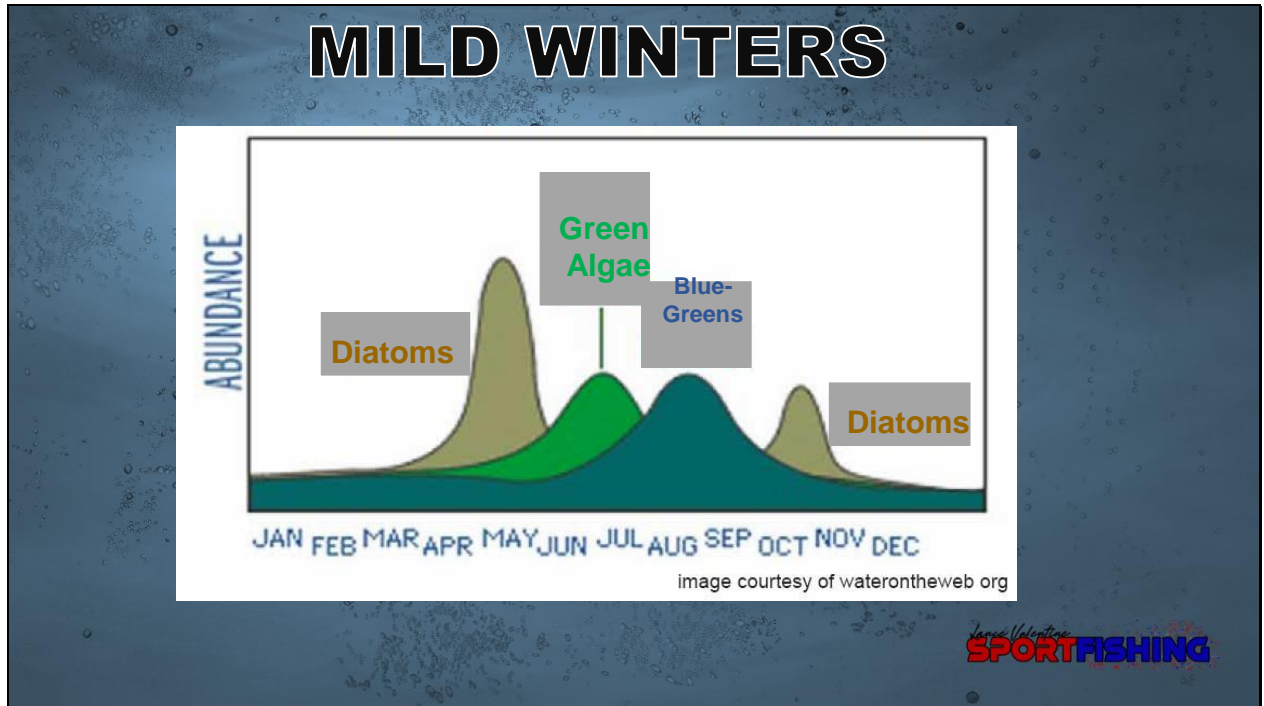
<https://www.rochesterfirst.com/>

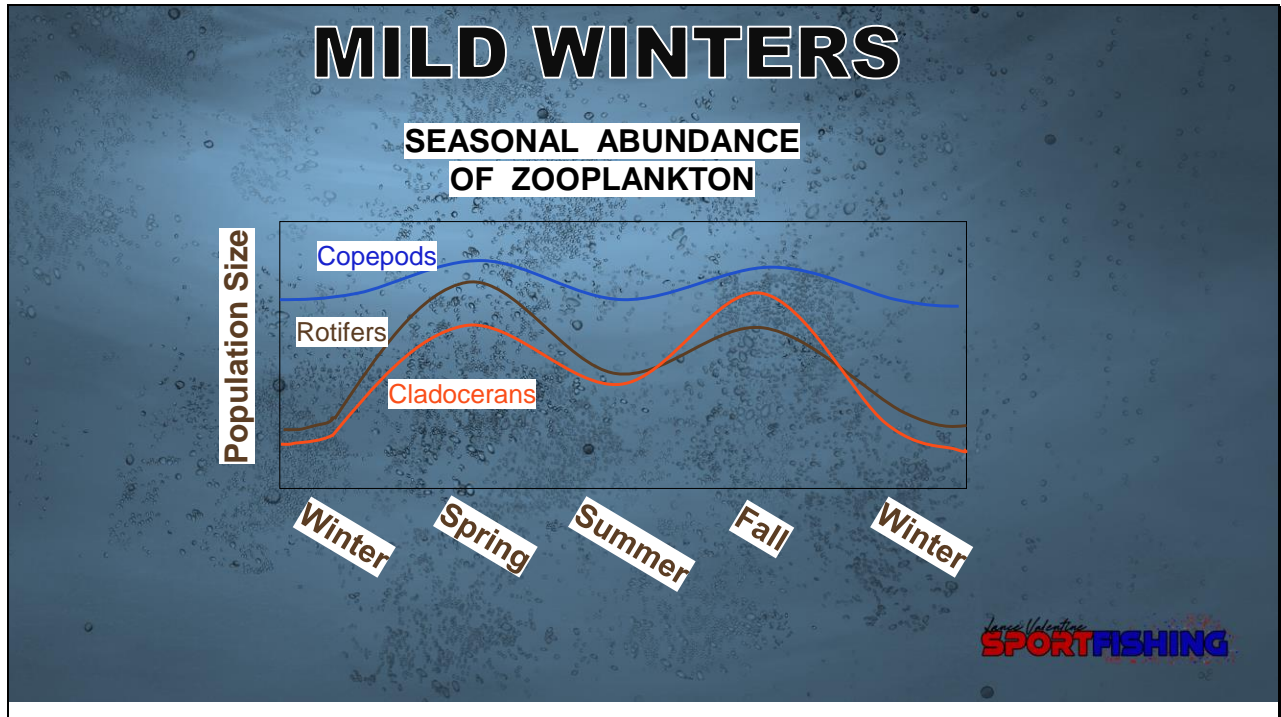
James Valentini
SPORTFISHING

MILD WINTERS WHAT AFFECTS DO THEY HAVE?

- 1. Milder winters may result in earlier ice-off and spawning**
- 2. Milder winters may impact prey species like Gizzard Shad**
 - Movement and spawn**
 - Walleye movements and feeding**
- 3. May cause issues in phenology (timing)**

James Valentin
SPORTFISHING





WARM WATER DISCHARGES CHANGES IN FISH MOVEMENT


- 1. WARM WATER DISCHARGE IN TRENTON AND OTHER AREAS SHUT DOWN**
- 2. • FORMALLY A BEACON FOR SPAWNING FISH**
 - PLUME OF WARM WATER THAT ENTERED LAKE**
 - HELD BAIT FOR POST-SPAWN FISH**
- 3. LACK OF DISCHARGE HAS CHANGED HOW FISH MOVE INTO THE RIVER**

James Valentine
SPORTFISHING

WARM WATER DISCHARGES

- 4. LESS SPAWNING ON US SIDE TO MIDRIVER**
 - **EGG MATS**
 - **DECREASED SPAWNING EARLY IN THE SEASON**
- 5. LACK OF DISCHARGE MAY HAVE CHANGED SPAWNING PATTERNS IN DETROIT RIVER**

James Valentine
SPORTFISHING



ANTHROPOGENIC INPUTS HAVE AN EFFECT

- ENVIRONMENTAL, BEHAVIORIAL, MAYBE LEADING TO MICROEVOLUTION

James Valentine
SPORTFISHING

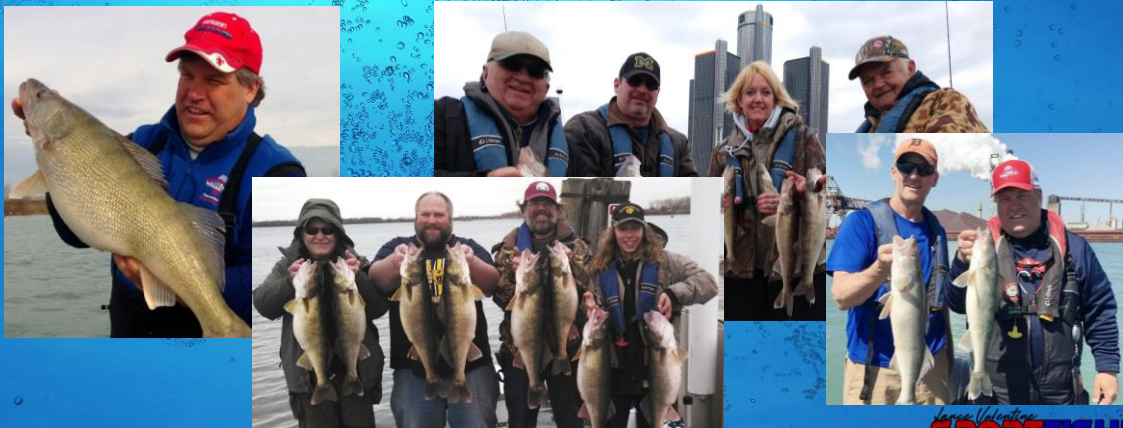
PRE-SPAWN MOVEMENTS

BY LANCE VALENTINE

DETROIT RIVER WORKSHOP

SEMINAR #3

Detroit River Pre-Spawn Movements



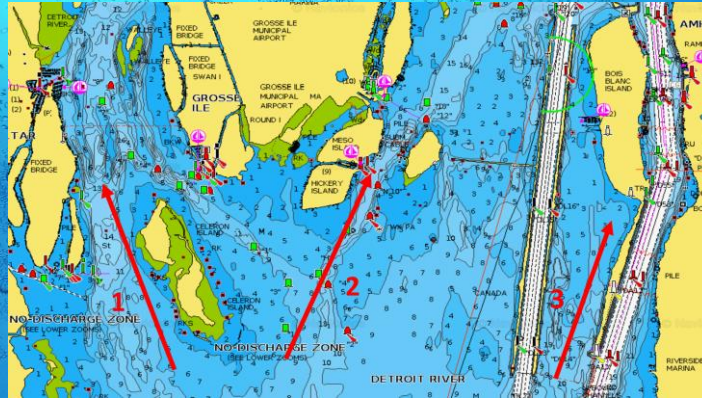
Lance Valentine
SPORTFISHING

Pre-Spawn Movements

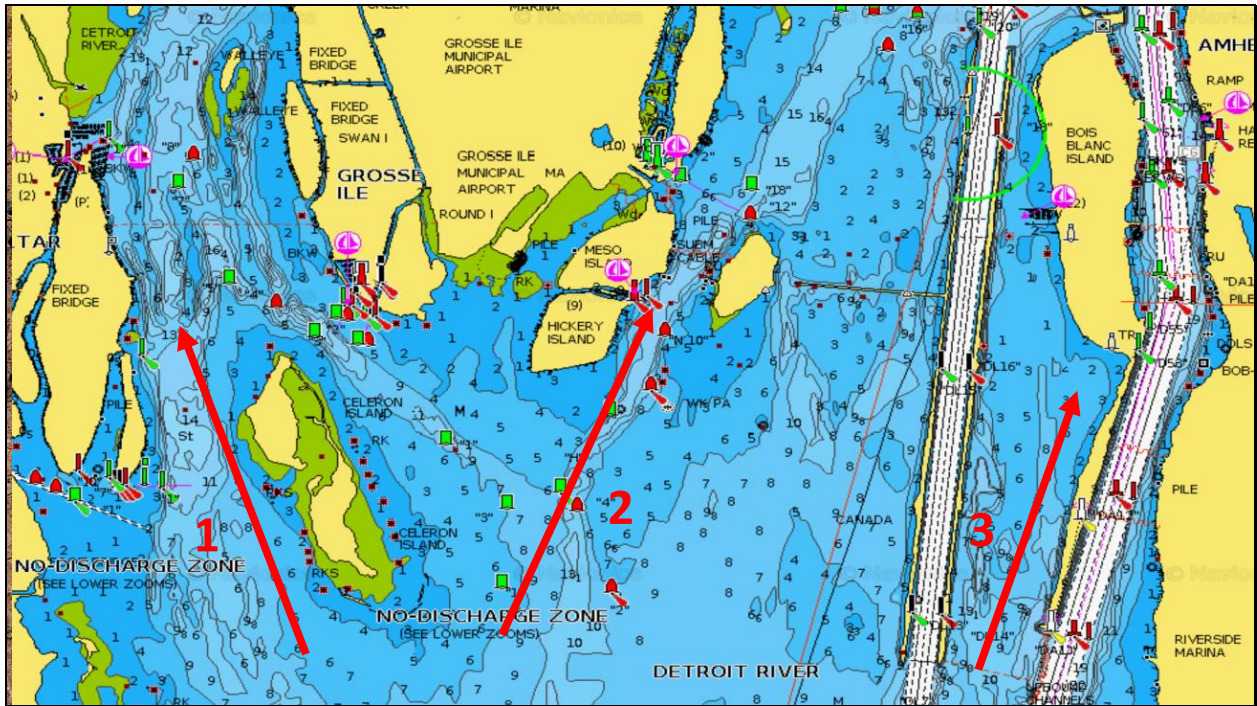
Pre-Spawn movements in the Detroit River start most years while there is still ice on the River. Movements can be large (up and down the river) or small (holding areas to spawning areas).

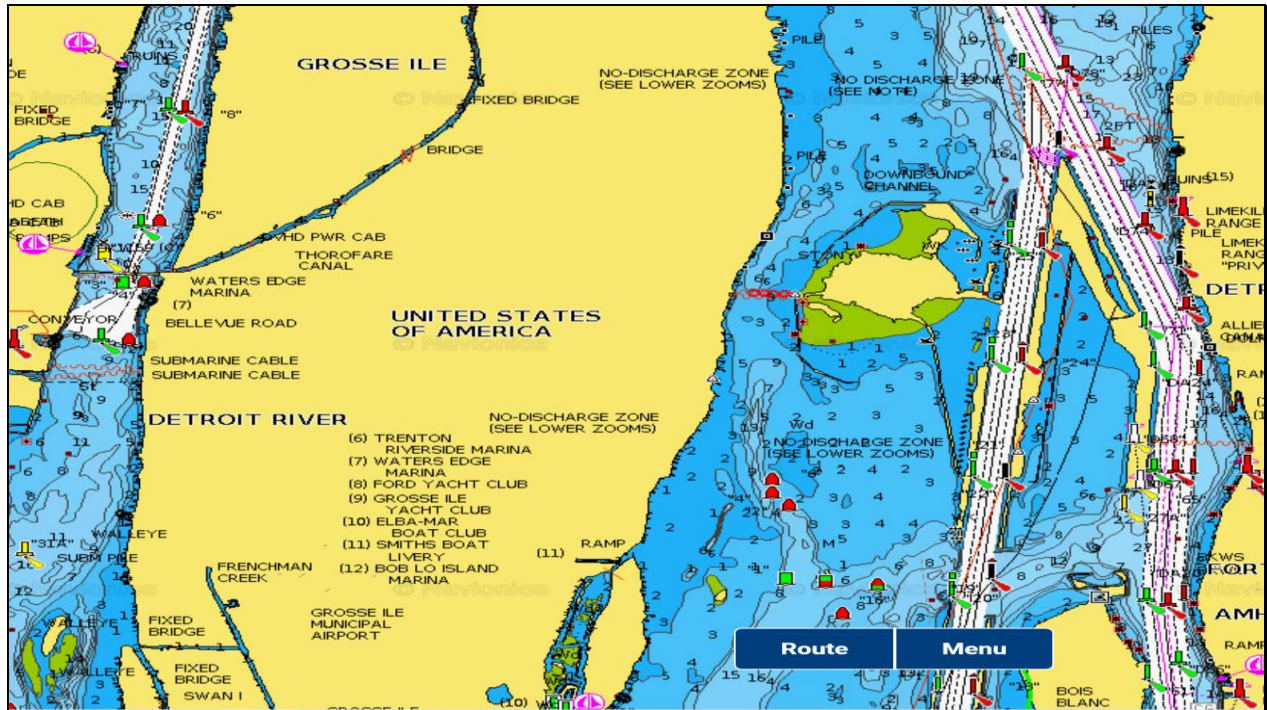
James Valentine
SPORTFISHING

Pre-Spawn Migrations Look for Edges

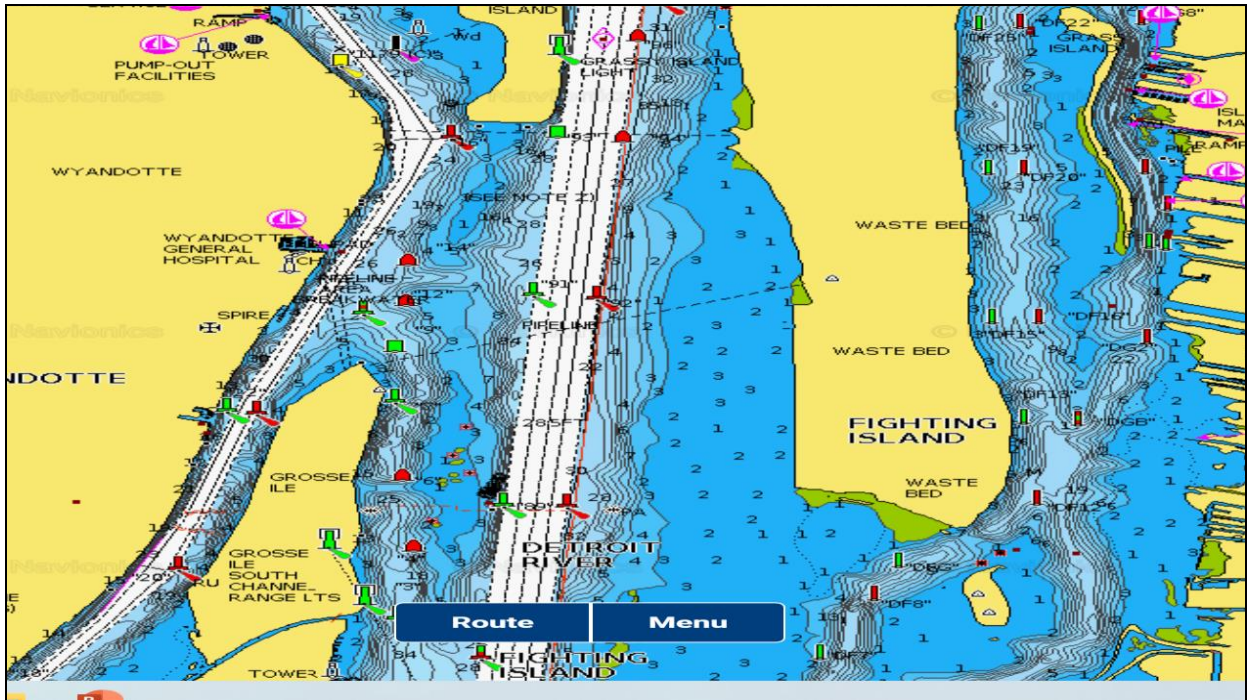


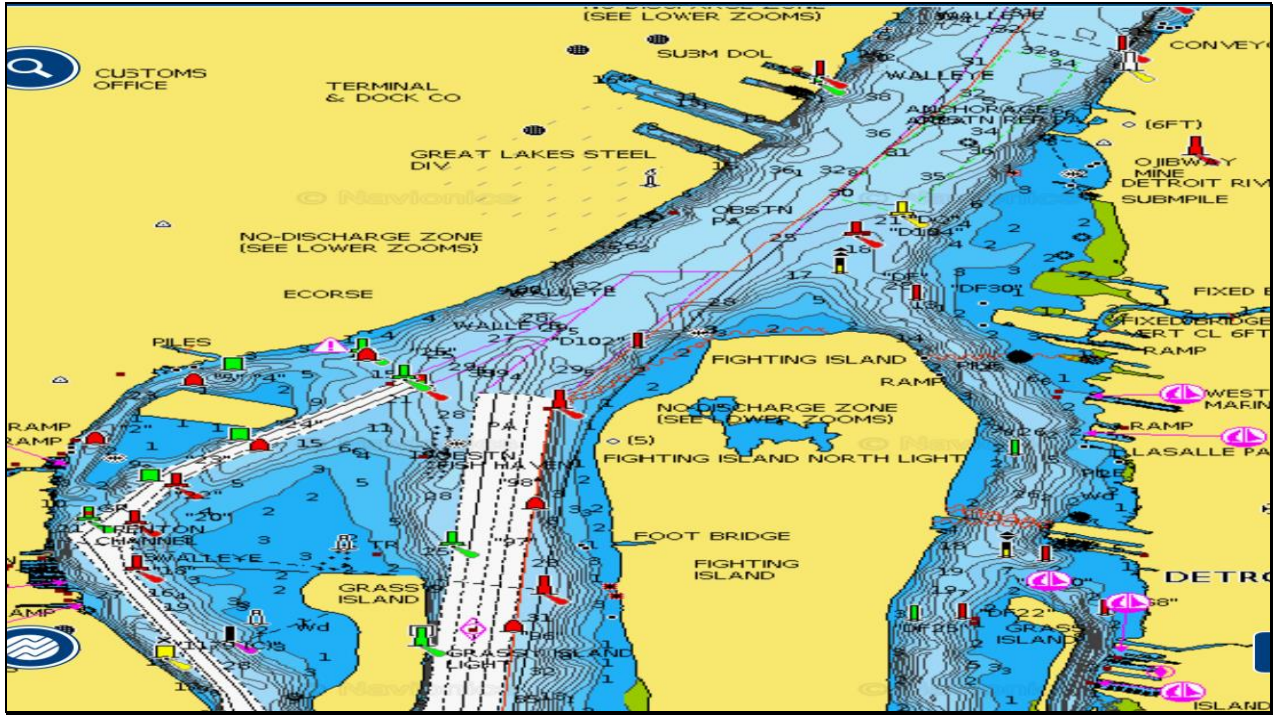
James Valentine
SPORTFISHING

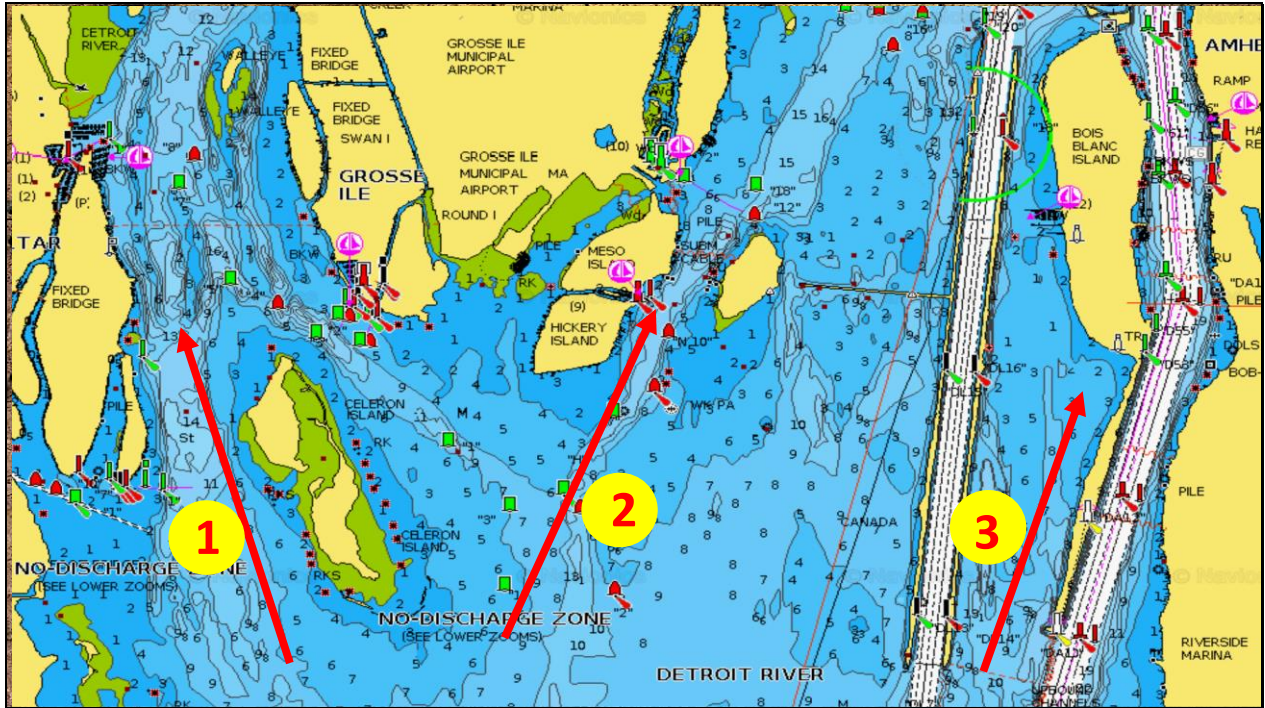




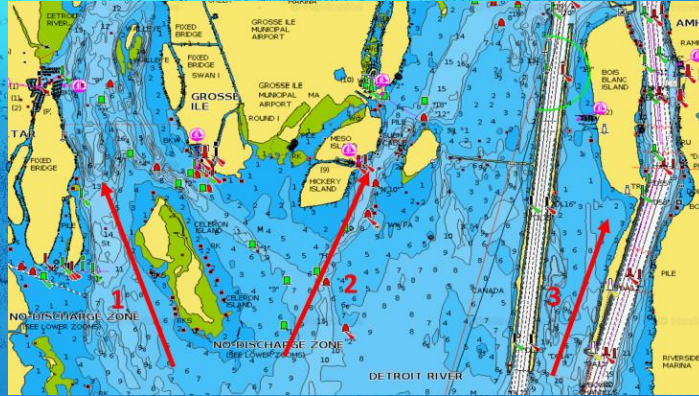








Pre-Spawn Migrations Moving to Spawning Areas



Large Water
SPORTFISHING

Holding Areas

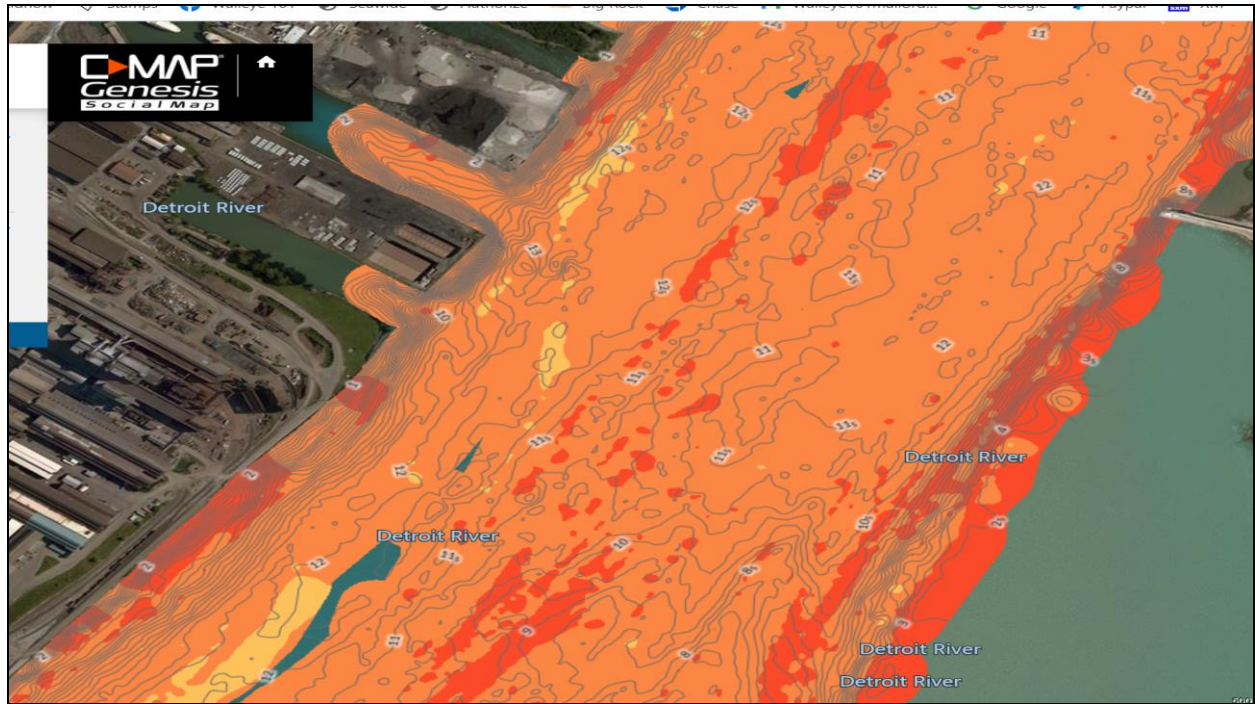
As spawning get closer, walleye will want to move toward where they will spawn, but still need the security that deeper water provides. Look for quick access to deep water and steep sloping structure adjacent to spawning areas.

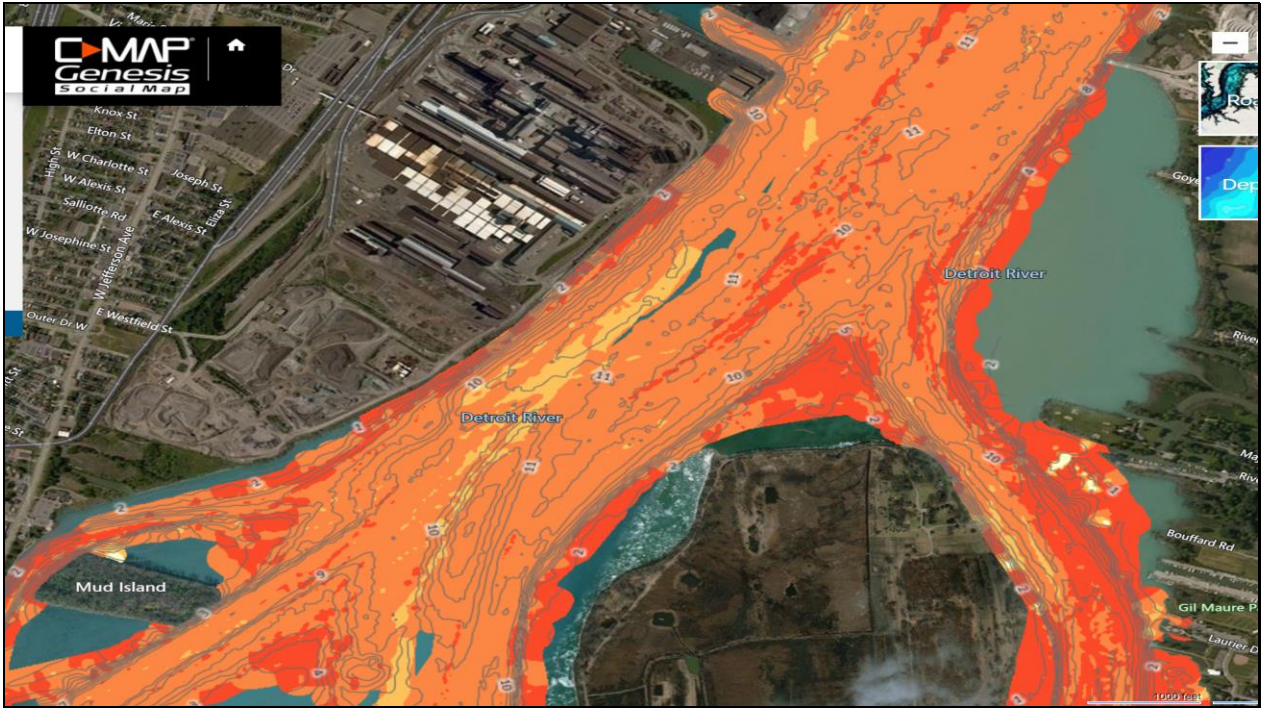
James Valentine
SPORTFISHING

Spawning Areas

1. Gravel with current
2. May be shallow, but can be as deep as 20'
3. Quick access to deep water helps
4. LOTS of fish may use key areas

James Valentin
SPORTFISHING







SPAWN LOCATIONS BY LANCE VALENTINE DETROIT RIVER WORKSHOP SEMINAR #4

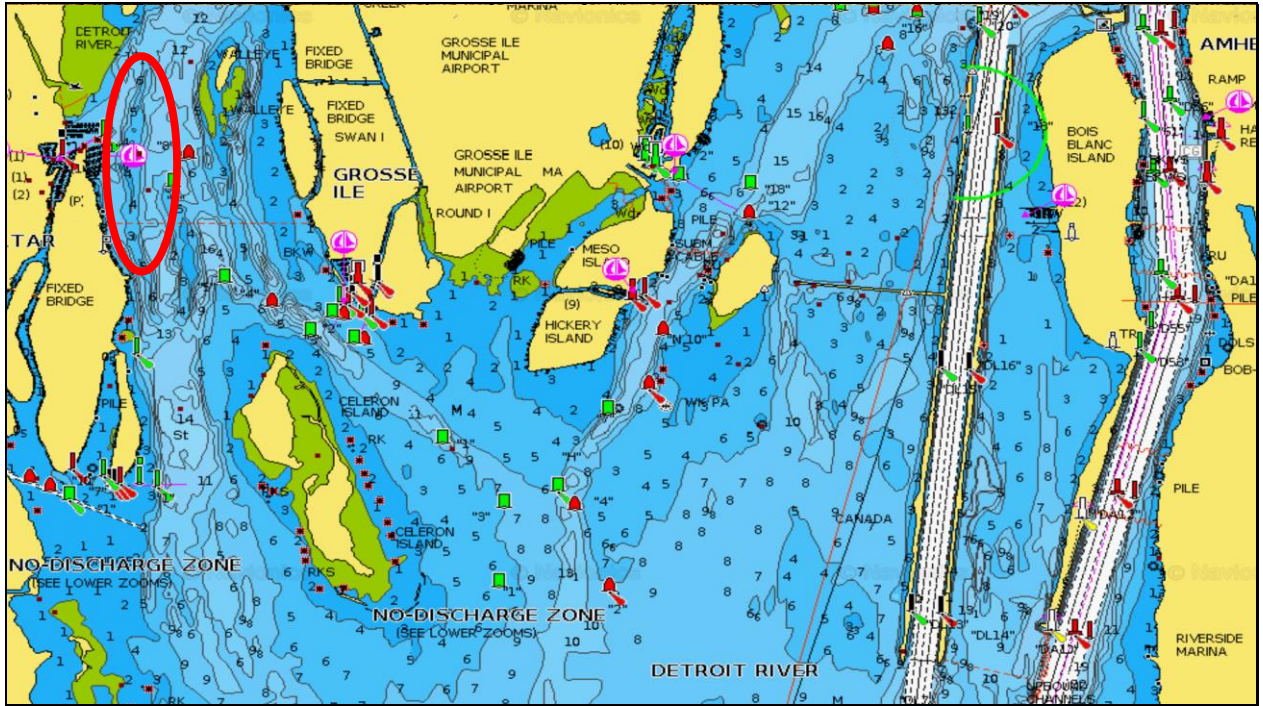


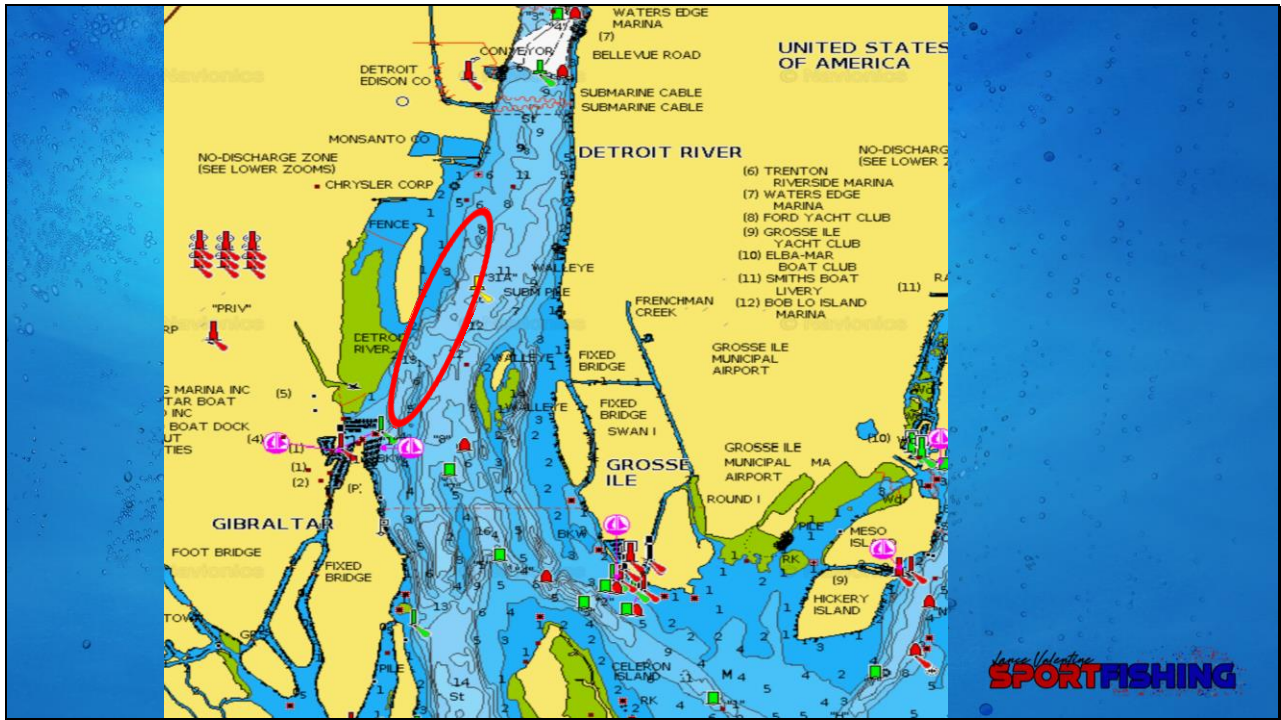
Spawning Areas

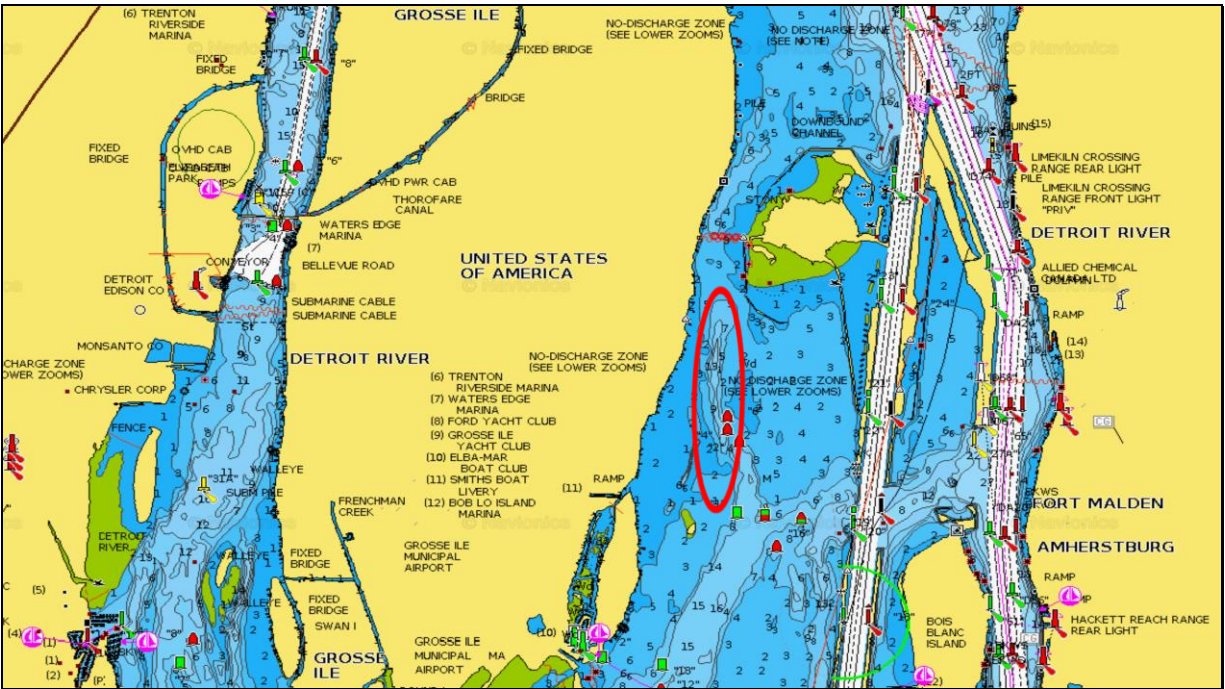
1. Gravel with current
2. May be shallow, but can be as deep as 20'
3. Quick access to deep water helps
4. LOTS of fish may use key areas

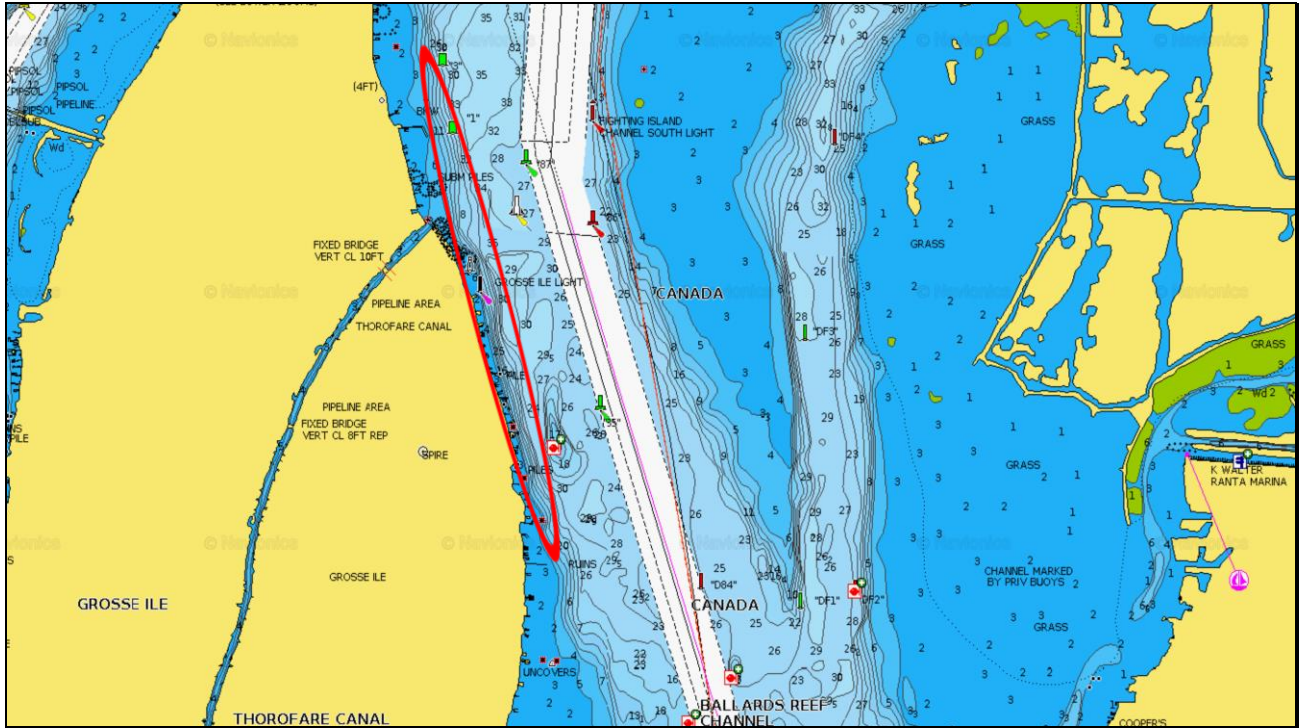
James Valentine
SPORTFISHING

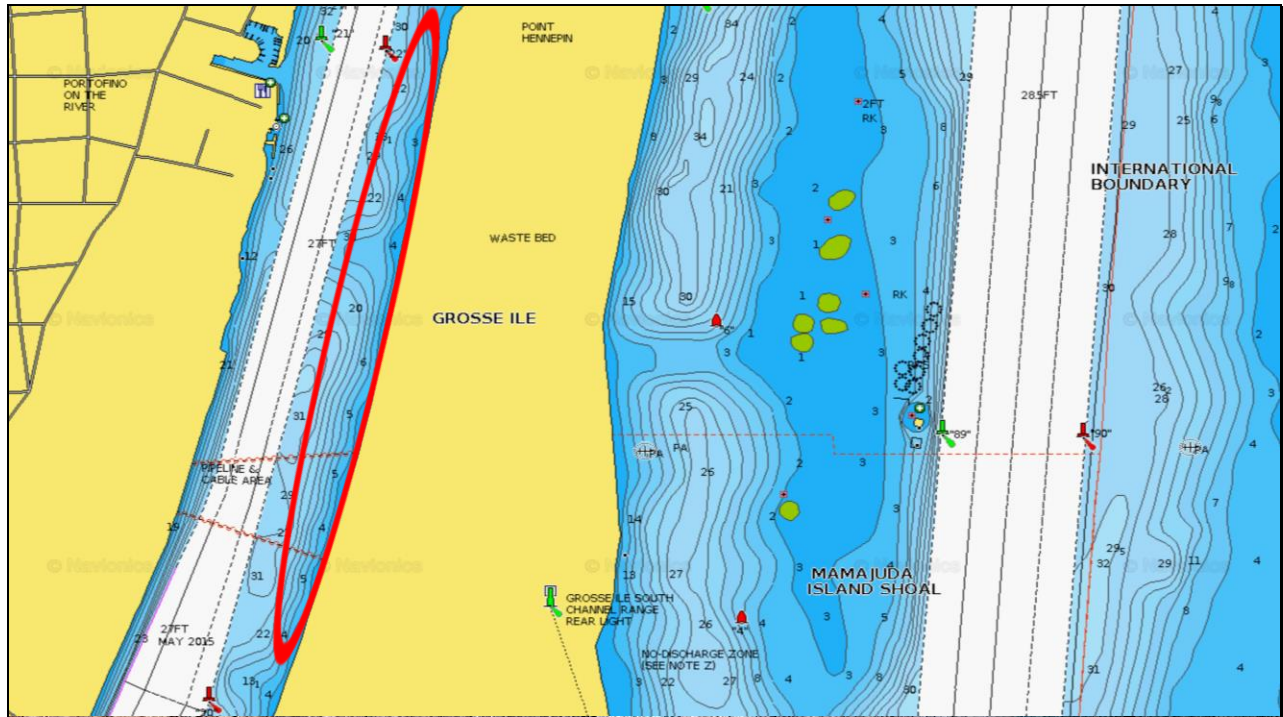


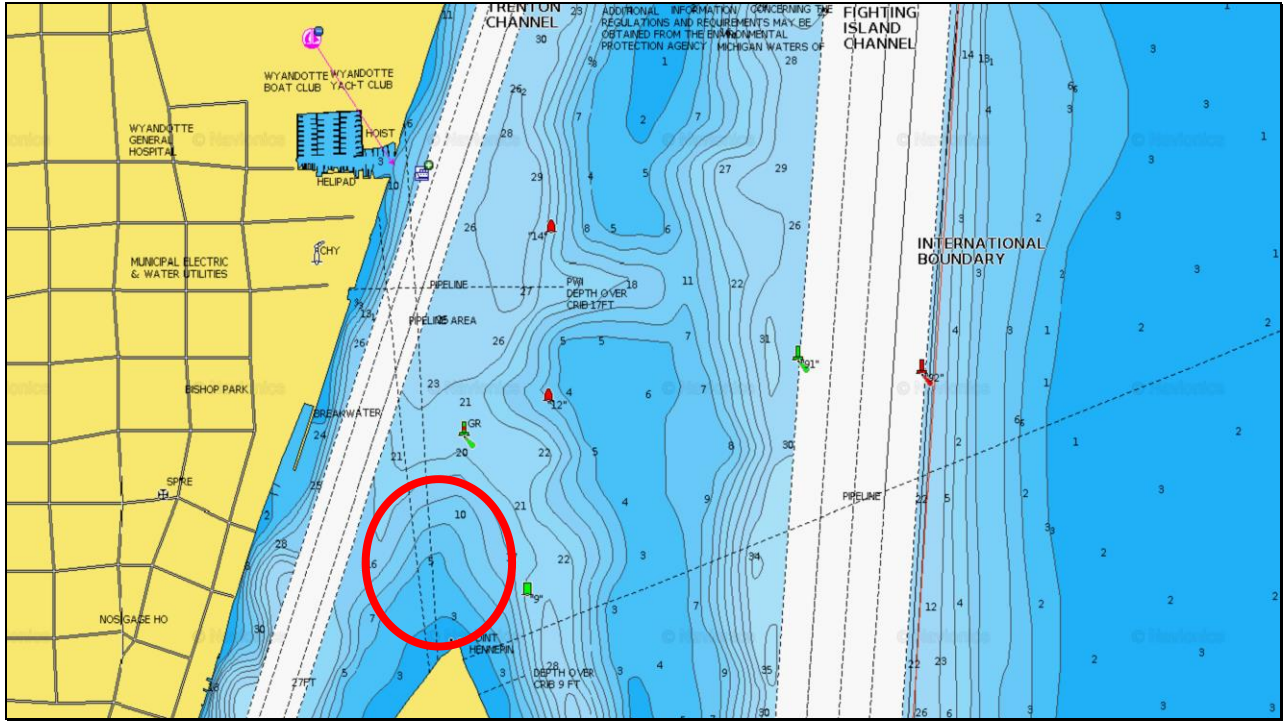


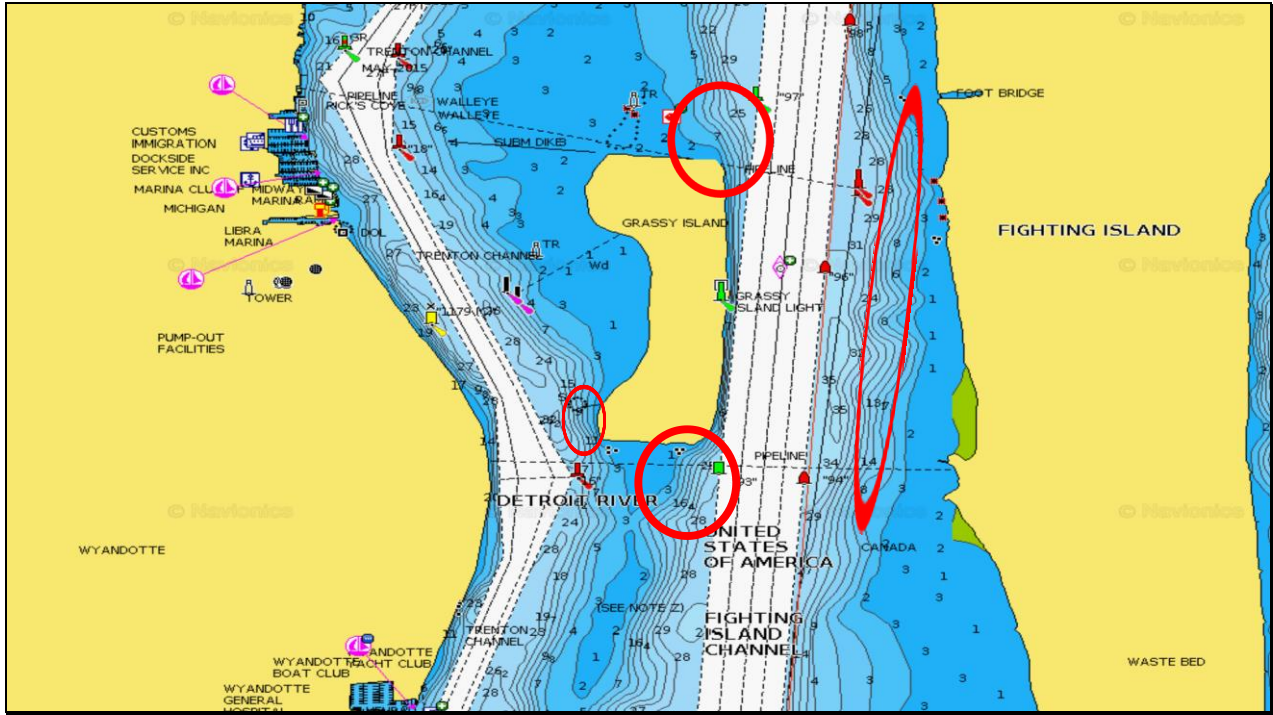


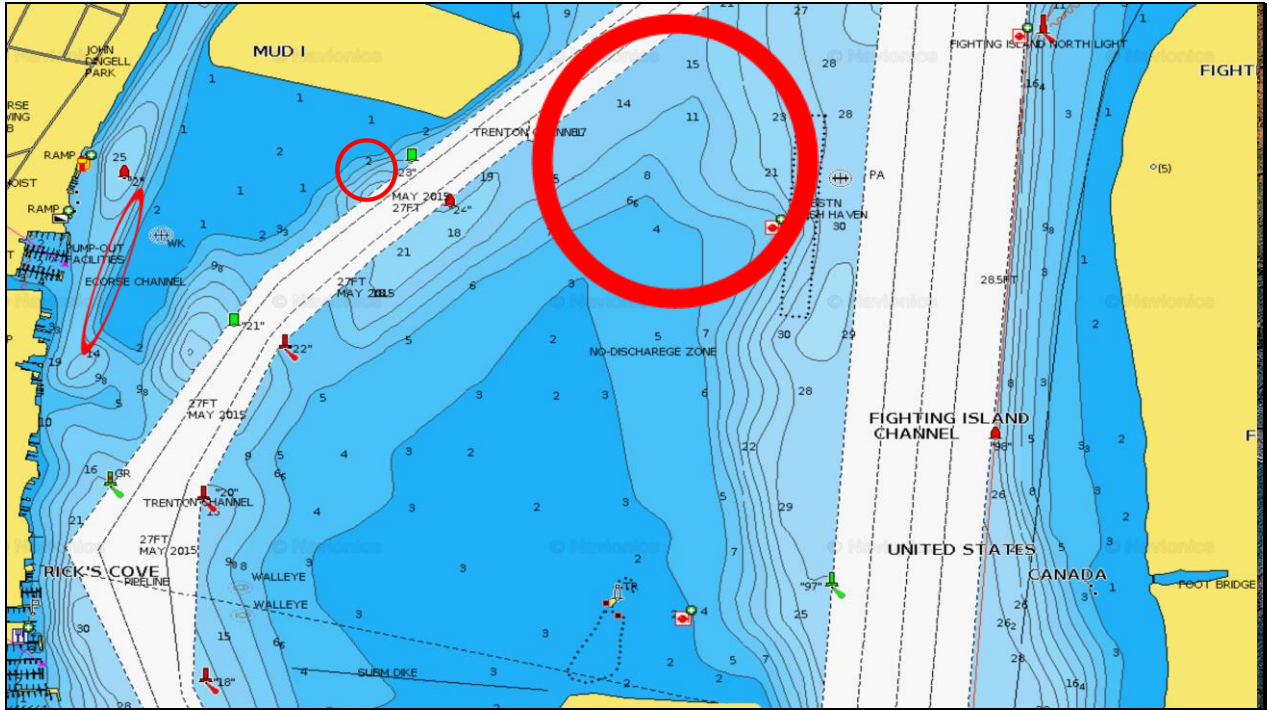


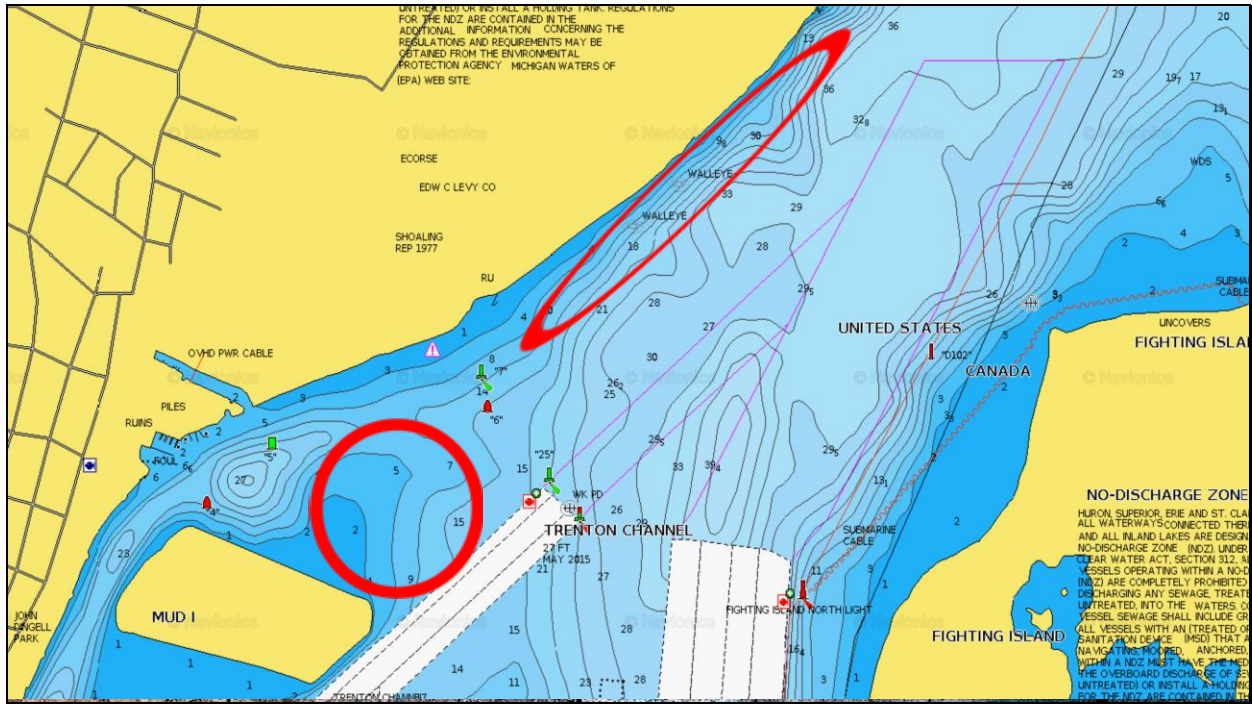


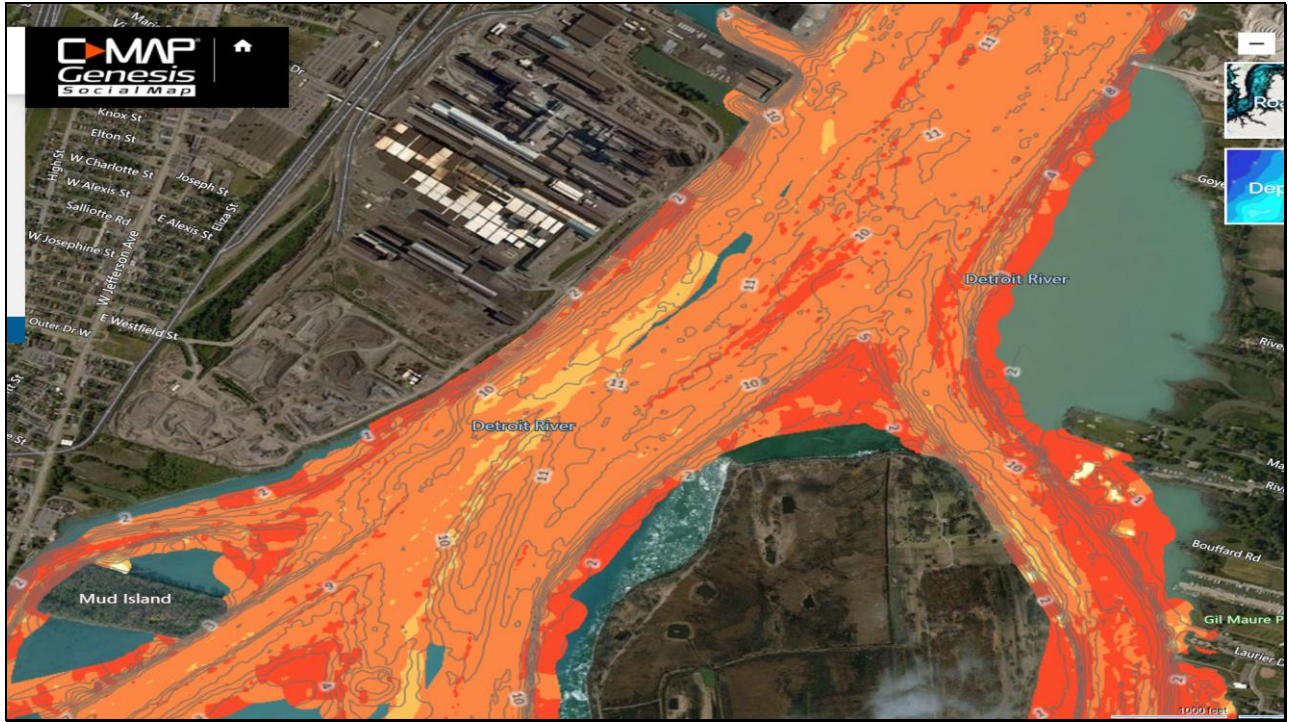


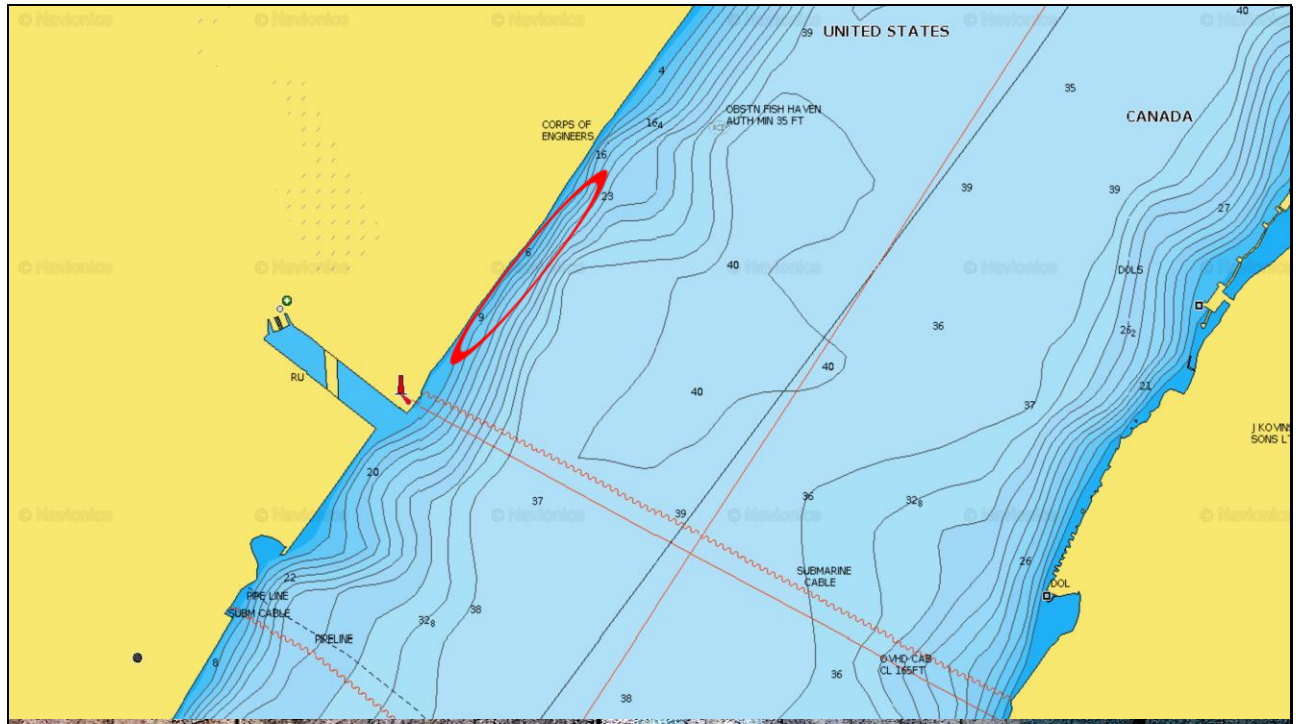


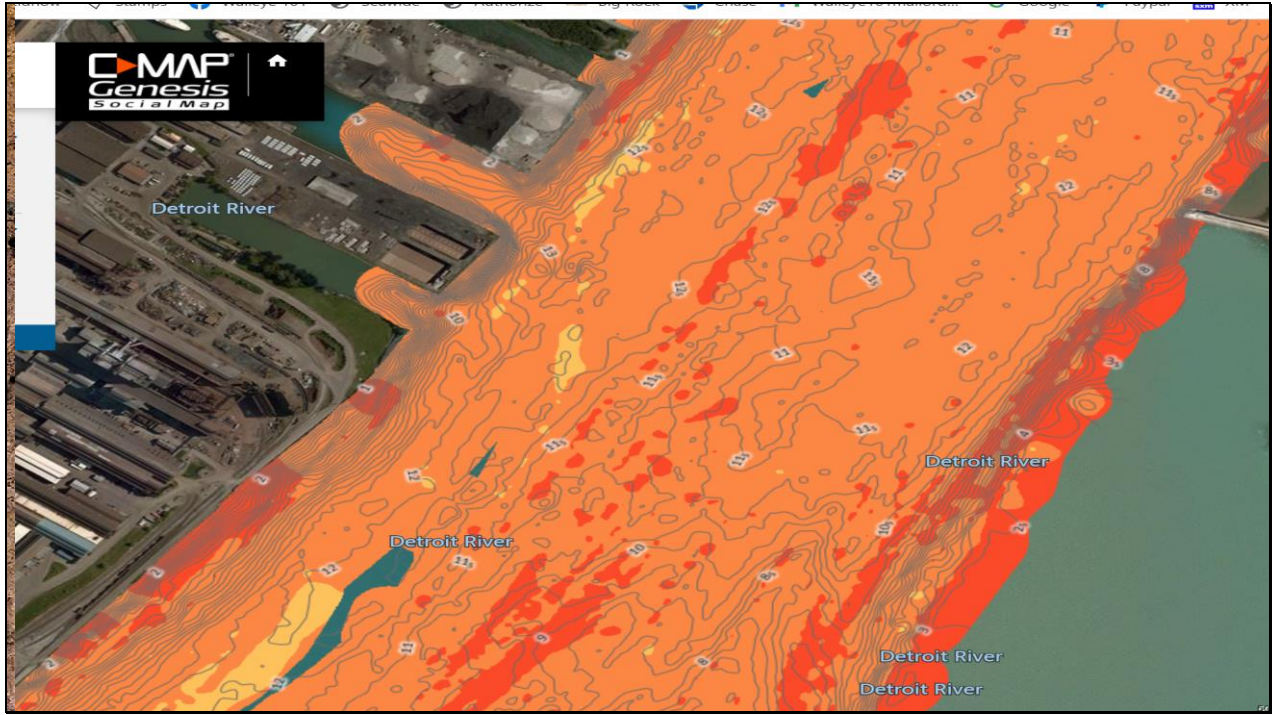












Spawning Areas

1. Gravel with current
2. May be shallow, but can be as deep as 20'
3. Quick access to deep water helps
4. LOTS of fish may use key areas

James W. Hunter
SPORTFISHING

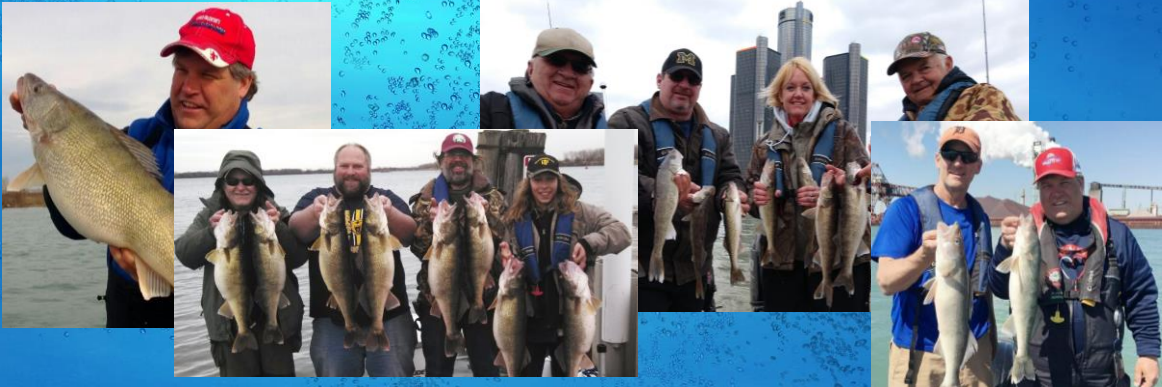
POST-SPAWN MOVEMENTS

BY LANCE VALENTINE

DETROIT RIVER WORKSHOP

SEMINAR #5

Detroit River Post-Spawn Movements

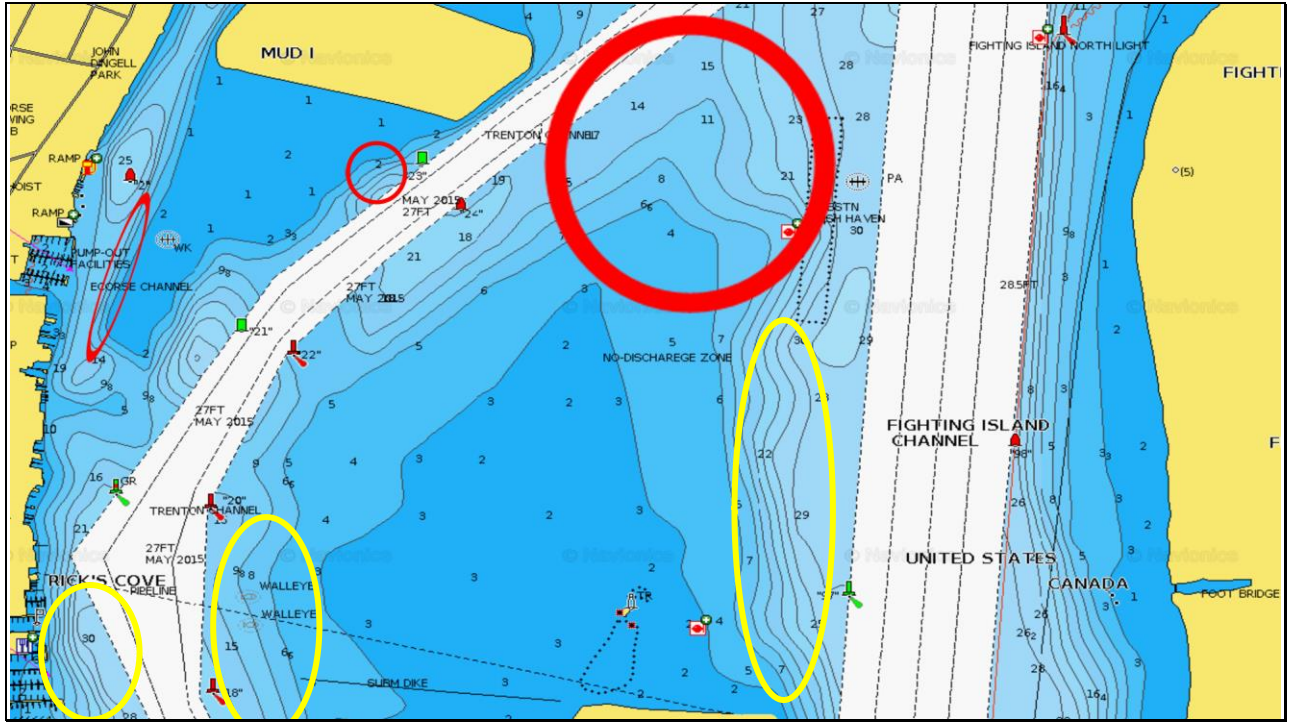


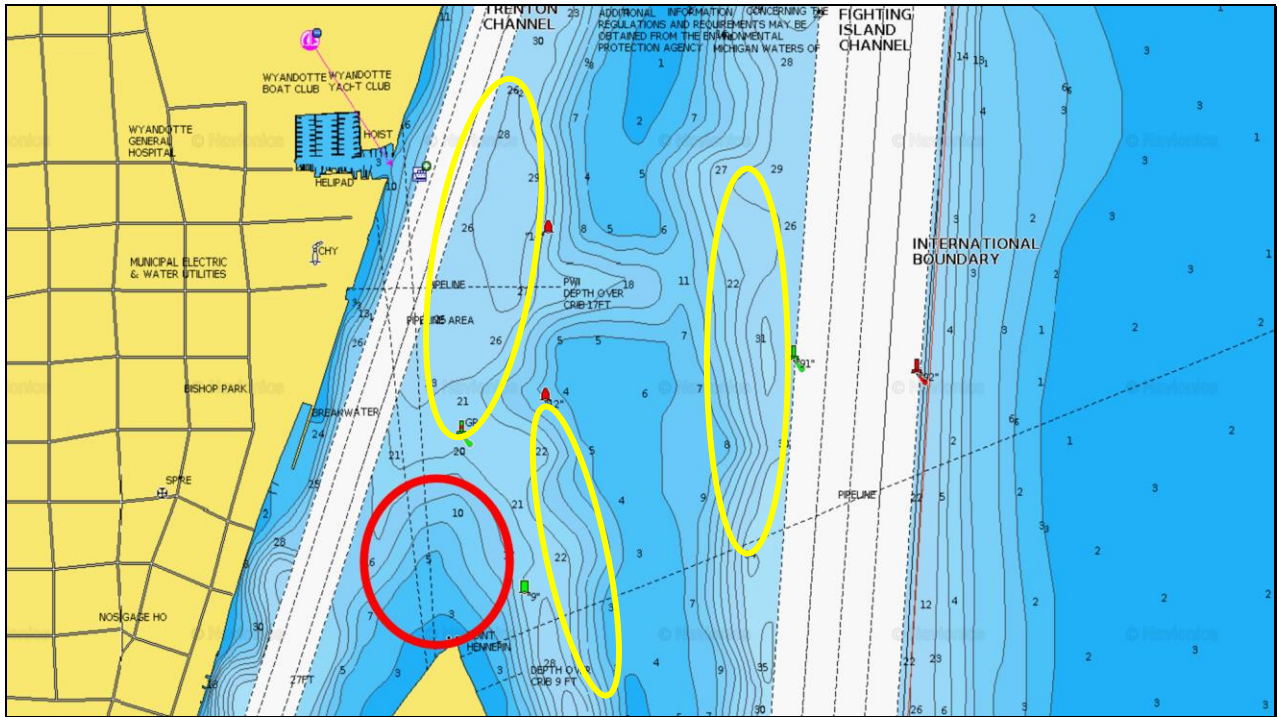
Timing

- **Post-Spawn dispersal is NOT the same for the entire population. Some fish will leave right away, some will find a place to stay and feed while moving and some will stay in the river all summer.**

Changes in Location

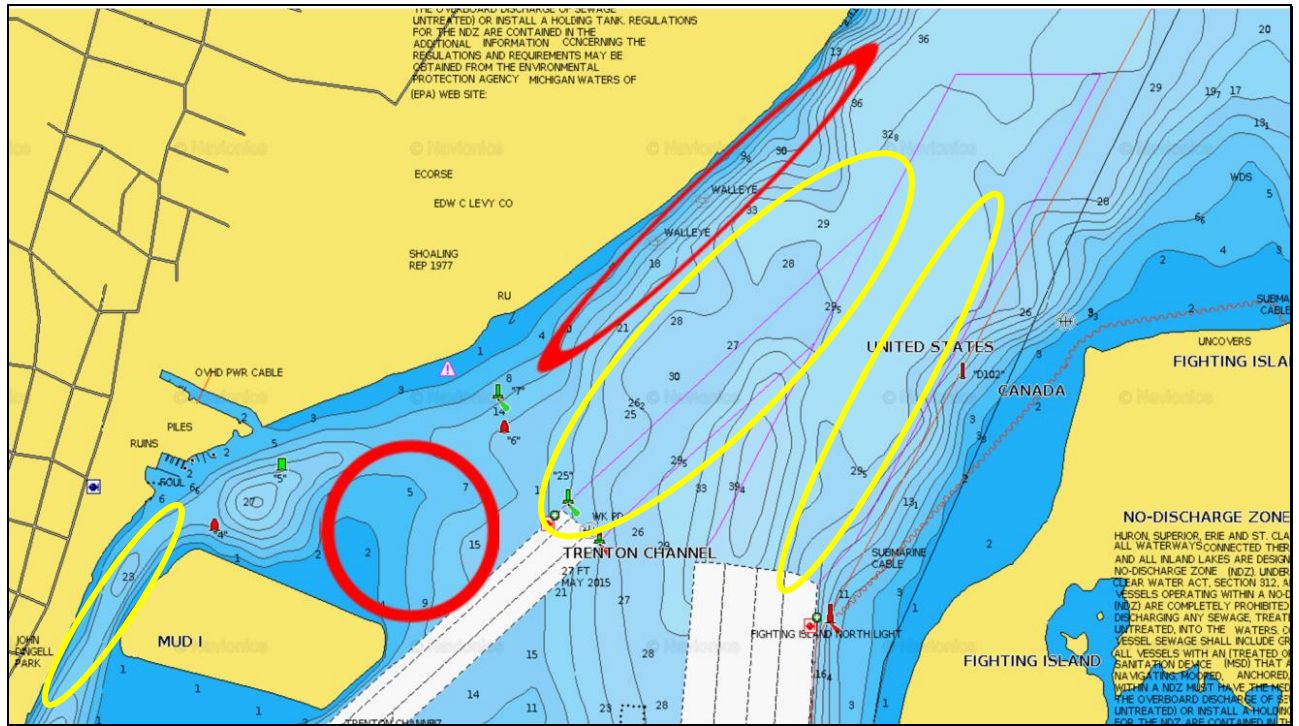
- **After Spawn, fish will start to locate more on flats as opposed to drop off areas. Flats are easier for fish to feed on and fish are now looking for food as opposed to resting and preparing to spawn**
- **Flats may be at ANY depth....as shallow as 5-6 or as deep as 30+ so we still need to be searching**





Changes in Migration Patterns

- **Post Spawn fish will begin to move more every day. While pre-spawn migration is usually a “one-way” movement, Post Spawn can be any direction looking for food.**
- **When Post Spawn fish find a comfortable place and food stays, the fish will stay!**
- **Post-Spawn dispersal may happen right away or WEEKS later**



Wisconsin Study

- **Post-Spawn females will come to the TOP of the water column, where the fastest current is and actually “ride” the heavy current back to the lake. How many fish have you marked up high in the river and thought “those can’t be walleye”? Hmmmm....**

Dispersal

- **Most dispersal follows the same routes as entry into the river**
- **Fish will use edges to disperse, but SHALLOW edges are used as much as deep edges**
- **Fish may NOT return to the same place they came from!!**
- **BAIT!!!!**

POST-SPAWN DISPERSAL
BY ALI SHAKOOR
DETROIT RIVER WORKSHOP
SEMINAR #6



OVERVIEW

1. HOW LONG DO WALLEYE STAY IN RIVER AFTER SPAWN?
2. MIGRATION ROUTES BACK OUT INTO LAKE
3. STRUCTURES AND PATHS WALLEYE USE BACK INTO THE LAKE
4. HOW WALLEYE DISPERSE ONCE BACK INTO LAKE

James Valentine
SPORTFISHING

IMMEDIATE POST-SPAWN

1. VERY LITTLE, IF ANY, FEEDING ACTIVITY DURING SPAWN-BUT WILL STRIKE
2. ENERGY HAS BEEN DEDICATED TO GAMETES SINCE FALL
3. SPAWN IS ENERGETICALLY/PHYSICALLY COSTLY TO WALLEYE

James Valentine
SPORTFISHING

IMMEDIATE POST-SPAWN HOW LONG DO THEY STAY IN THE RIVER?

- 1. NOT ALL DETROIT RIVER SPAWNING FISH MIGRATE**
- 2. NOT ALL SOME FROM LAKE ERIE EITHER**
- 3. FISH COME IN TO SPAWN IN MULTIPLE WAVES OVER TIME**
- 4. EARLY SPAWNERS LEAVE FAST (BIGGER FISH?)
SOME HANG AROUND LONGER**
 - WHY? HOW DO YOU KNOW?**

James Valente
SPORTFISHING

POST-SPAWN MOVEMENTS OUT OF THE RIVER

1. REMEMBER THE RIVER HAS TWO MOUTHS
 - FISH WILL BE LEAVING EACH END
2. EXIT DIRECTION EFFECTS HOW/WHEN THEY LEAVE
 - SOUTH EXITING FISH CAN RIDE CURRENTS
 - NORTH EXITING FISH HAVE TO FIGHT CURRENTS
 - WHICH FISH MAY TAKE LONGER??

James Valentin
SPORTFISHING

STRUCTURES AND PATHS POSSIBLE ROUTES OUT OF THE RIVER

NORTH MOVING FISH

- **FIGHTING CURRENT SO WILL UTILIZE CURRENT BREAKS MORE**
- **BOTTOM HAS LOTS OF "STRUCTURE" THAT BLOCKS FLOW**
- **UNDERWATER POINTS/HUMPS**
- **BENDS IN THE RIVER**
- **FRONTSIDES OF HOLES**

James Valentine
SPORTFISHING

STRUCTURES AND PATHS POSSIBLE ROUTES OUT OF THE RIVER

SOUTH MOVING FISH

- **LAZY, THEY CAN RIDE CURRENT DOWN**
- **SOMETIMES HIGHER IN THE WATER COLUMN**
 - **DON'T NEED BREAKS TO MOVE**
- **UTILIZE SAME STRUCTURE AS "NORTH" FISH**
 - **PUTTING ON THE FEED BAGS VS LEAVING**

James Valentine
SPORTFISHING

STRUCTURES AND PATHS

POSSIBLE ROUTES OUT OF THE RIVER

- 1. SIMILAR ROUTES ENTERING AND LEAVING**
- 2. FISH WILL “TAKE A BREAK” IN CERTAIN AREAS**
 - **REST, FEED**
 - **MORE VULNERABLE HERE**
 - **WHERE THEY STAGE MAY DICTATE ROUTES BACK INTO LAKE**
 - **LAKE ERIE AND ST. CLAIR**

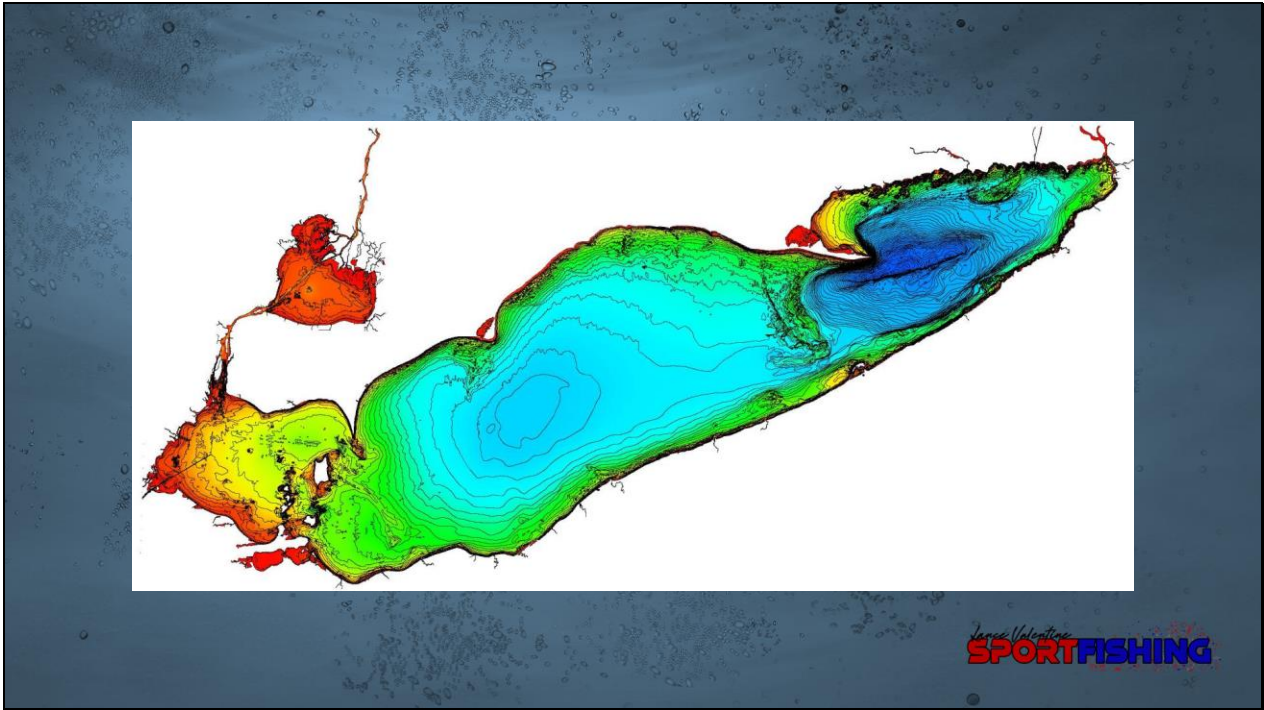
James Valentine
SPORTFISHING

LAKE DISPERSAL

**WHICH WAY DID HE GO, WHICH WAY DID HE GO?
GO?**

- 1. INFINITE NUMBER OF PATHWAYS OUT OF THE RIVER**
- 2. • WHY DOESN'T ANYONE FISH THE MOUTHS?
• MICHIGAN, OHIO, OR CANADA?**
- 3. WATER TEMP COMES INTO PLAY AS SEASON
PROGRESSES**

James Valentine
SPORTFISHING



NAILING DOWN TRAVEL ROUTES

- 1. GET OUT OF YOUR BACKYARD**
- 2. NETWORK**
WAYPOINTS FOR EVERY FISH WITH INFO
- 3. COMPARE WAYPOINTS TO ZOOMED-IN MAPPING**
- 4. EXPERIENCE**
- 5. LEWT EXAMPLE**

James Valentine
SPORTFISHING

**BASIC PRESENTATIONS AND
ADJUSTMENTS**
BY LANCE VALENTINE/MARK PIENIOZEK
DETROIT RIVER WORKSHOP
SEMINAR #7



PRESENTATIONS

Basic Presentation

- 1. SHORT, STIFF RODS (5'6-6')**
- 2. BRIGHT COLORED BRAIDED LINE**
- 3. NO LEADERE**
- 4. HEAVY JIGS (3/4-10Z) DESIGNED FOR CURRENT**
- 5. PLASTIC TAILS/STINGER HOOK**
- 6. VERTICAL!!**

Steve Winters
SPORTFISHING

PRESENTATIONS

Adjustments

- 1. LIGHTER JIGS (DOWN TO 3/8 OUNCE)**
- 2. SUBTLE JIG COLORS**
- 3. SMALLER BODIES**
- 4. CLEAR BODIES**
- 5. NOT VERTICAL-OFF THE BOTTOM**
- 6. VERY LITTLE MOVEMENT**

James H. Hester
SPORTFISHING

PRESENTATIONS

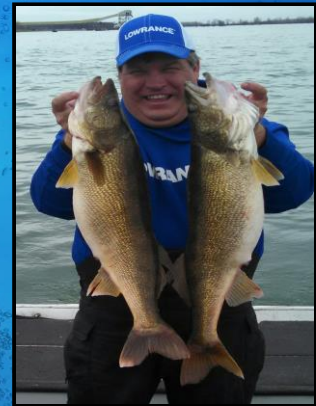
Other Adjustments

- 1. FISH LOWLIGHT PERIODS**
- 2. CASTING JIGS**
- 3. CASTING GLIDE BAITs**
- 4. TROLLING WITH BOTTOM BOUNCERS**

Lance Valentine
SPORTFISHING

FAVORITE RIVER SPOTS
BY LANCE VALENTINE
DETROIT RIVER WORKSHOP
SEMINAR #8

LANCE'S FAVORITE SPOTS



Lance Valentine
SPORTFISHING

